

THE PROSTATE A TROUBLESOME GLAND

THADDEUS JOHN BELL, MD

FOUNDER, CEO

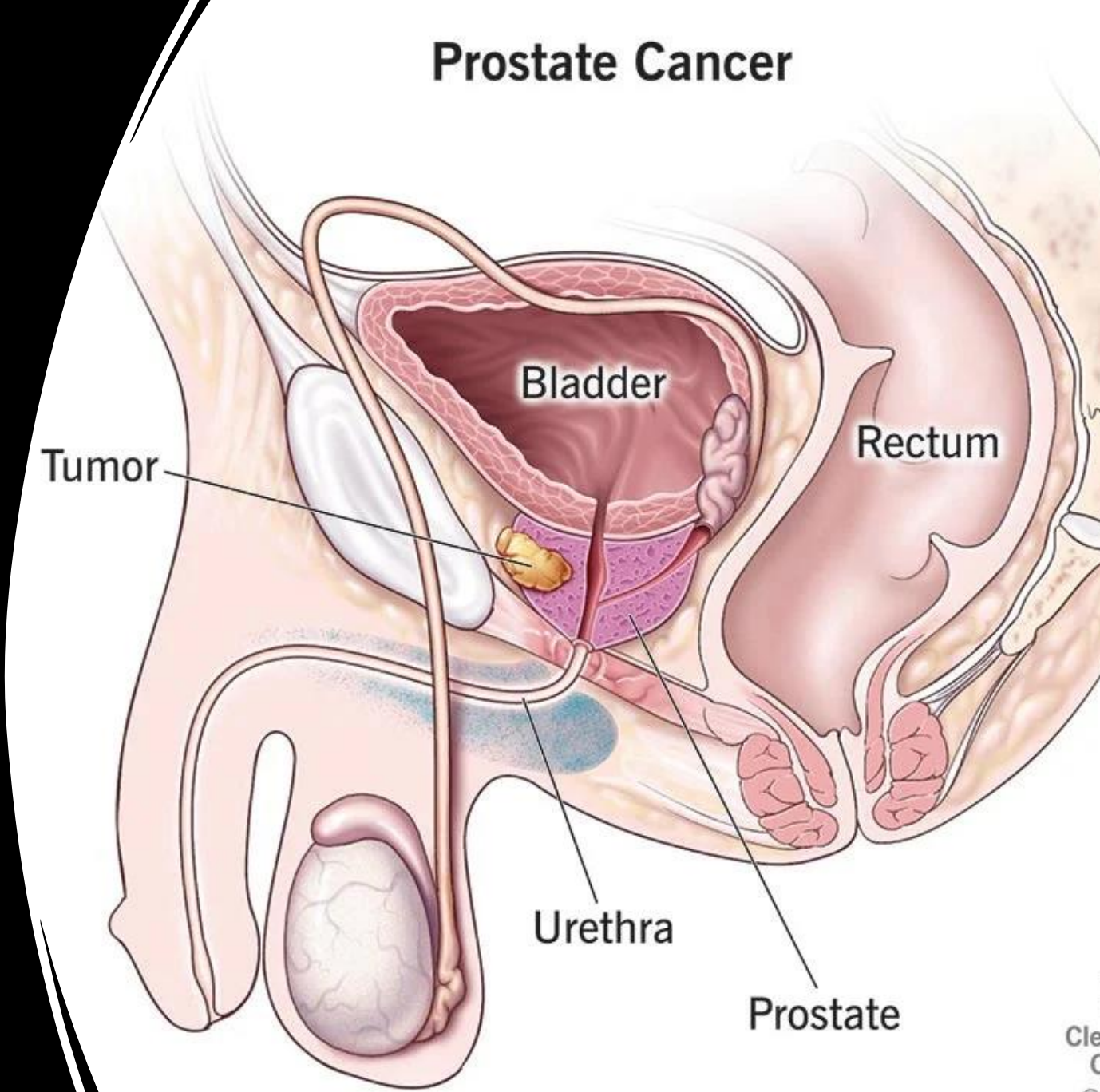
CLOSING THE GAP IN HEALTH CARE

DECEMBER 9, 2023



Closing / the Gap
in Health Care

Prostate Cancer

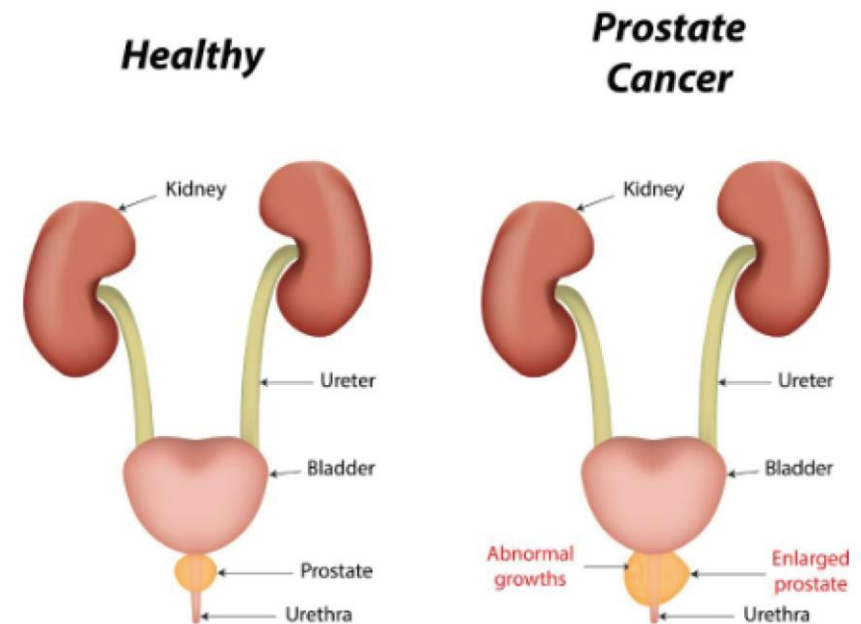


▶ THE PROSTATE GLAND

Symptoms (No symptoms) In my practice

- ▶ Trouble urinating
- ▶ Frequent urination
- ▶ Decrease force of urination
- ▶ Difficulty starting or stopping urine stream
- ▶ Blood in the semen
- ▶ Pain or discomfort in the pelvic area
- ▶ Bone pain

Prostate Cancer





Causes

- ▶ Advanced age
- ▶ African American
- ▶ Family History
- ▶ Obesity
- ▶ Diet

Treatment

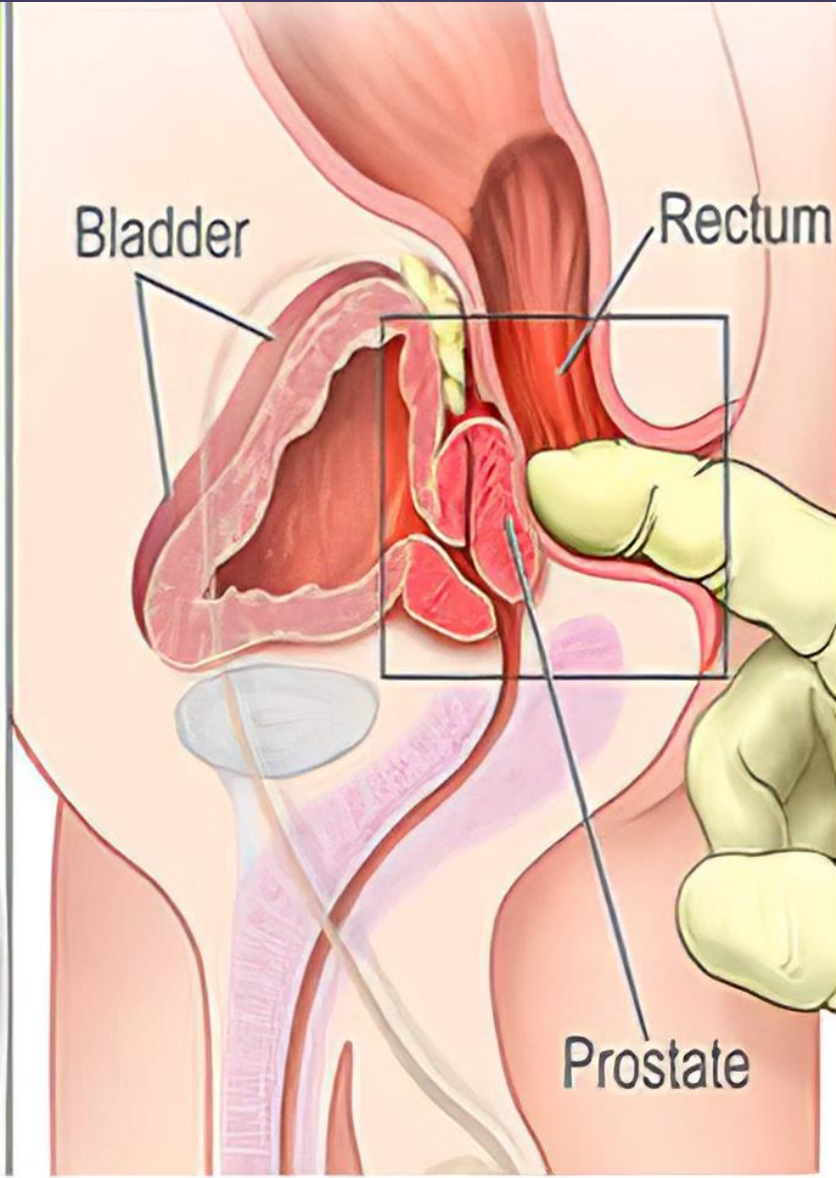
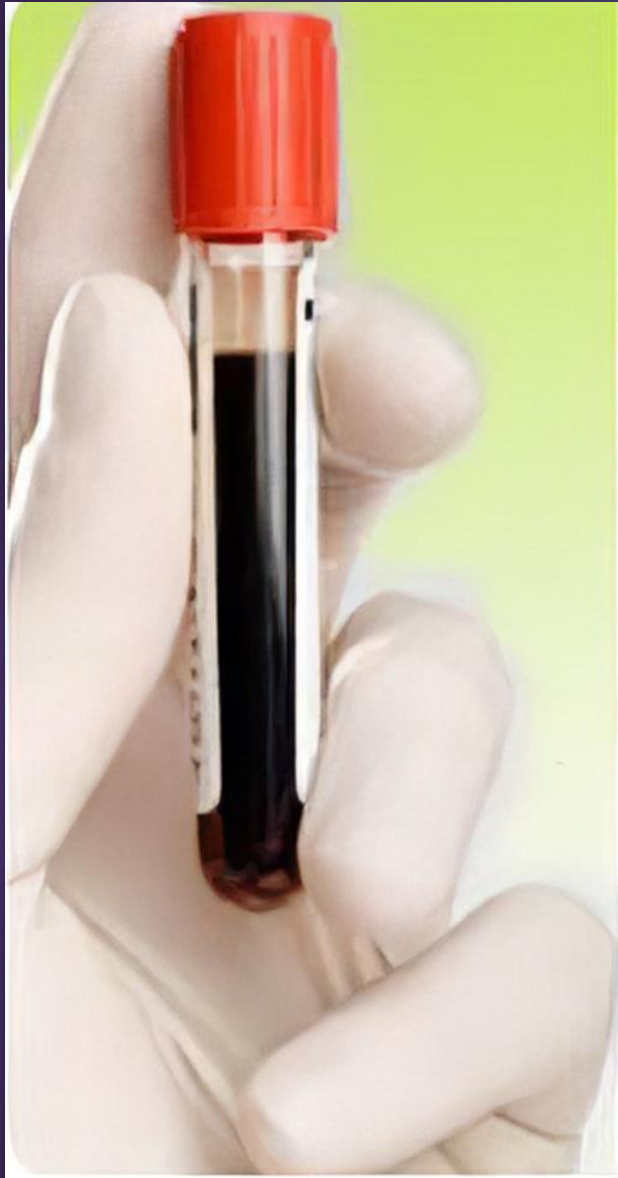
- ▶ Surgery (Robotic Surgery)
- ▶ Hormones
- ▶ Chemotherapy
- ▶ Radiation





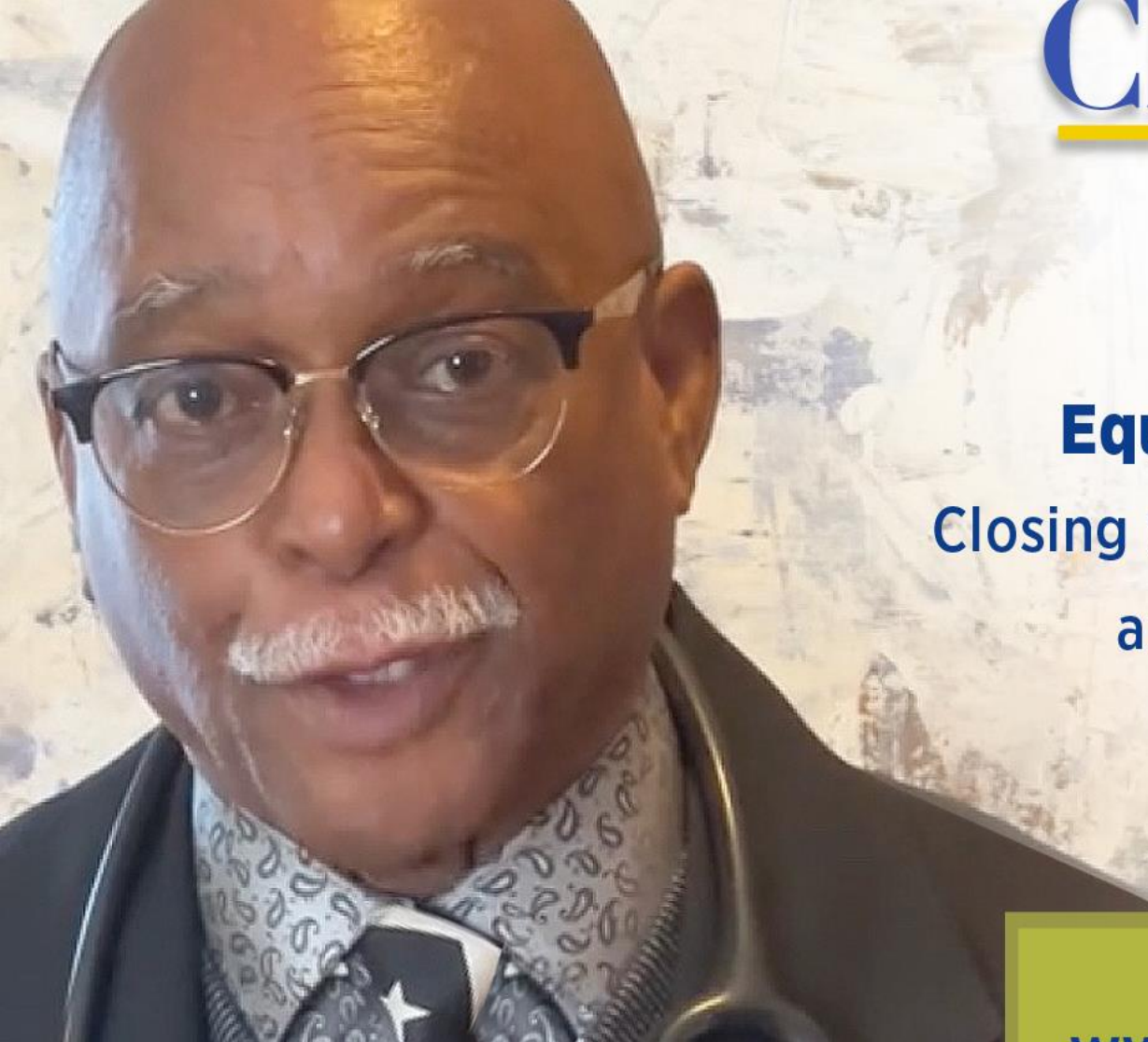
HOW WILL THIS AFFECT MY SEX LIFE

Closing / the Gap
in / Health Care



Early
Detection is
Paramount

DISCUSSION TO BE CONTINUED



Closing the Gap in Health Care

Equality and Equity is not the same.

Closing the gap in healthcare for African Americans
and the underserved is changing that.

We appreciate your support.

Twenty one years strong.

SEE OUR WEBSITE AT

www.closingthegapinhealthcare.org